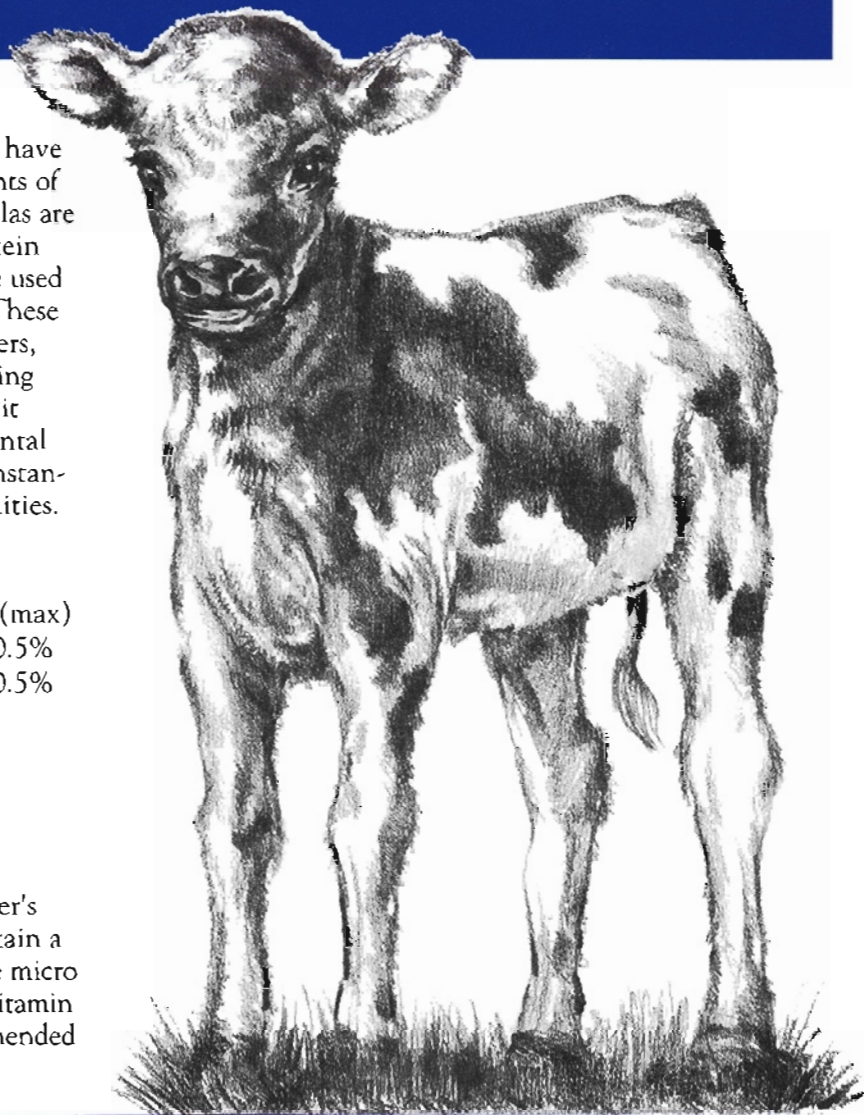


PREMIUM CALF MILK REPLACERS

Soy Protein Concentrate/Wheat Isolate Formula



ESMILCO PREMIUM CALF MILK REPLACERS have been formulated to meet the nutritional requirements of the growing baby calf. The proteins in these formulas are derived from milk products, soy isolate and soy protein concentrate. Modified wheat protein might also be used in place of, or in combination with, soy proteins. These formulas have been proven to be excellent performers, especially as an integral part of a complete calf feeding program. Various levels of fat are available to permit flexibility in energy density for different environmental and management conditions. These products are instantized to provide easy, fast and complete mixing qualities.

NUTRIENT LEVEL GUARANTEES

PROTEIN (min.)	FAT (min.)	FIBER (max)
20-22%	20%	0.25-0.5%
20-21%	15%	0.25-0.5%

VITAMIN AND MINERAL LEVELS

VITAMIN A	30,000 IU/LB
VITAMIN D3	4,000 IU/LB
VITAMIN E	100-150 IU/LB

Vitamin levels may be customized to fit the customer's specific needs. The PREMIUM milk replacers contain a complete vitamin and mineral premix with all of the micro nutrients necessary for optimum calf performance. Vitamin and mineral levels meet or exceed the levels recommended by the National Research Council.

PREMIUM CALF MILK REPLACERS

FEATURES

- Milk protein
- Plant protein isolates and concentrates
- Edible fat blend
- Instantized
- Proper vitamin and mineral fortification

ADVANTAGES

- Easily digestible
- Baby calves most digestible plant protein source
- Economical protein source
- Vegetable protein
- Meets calves' energy requirement
- Mixes easily
- Meets nutritional needs

RESULTS

- Optimized growth rate
- Better performance than other plant proteins
- Lower cost
- Easy transition to dry feed
- Optimized performance
- Time savings
- Better calf performance

